

Extension Agents – Disaster Assessment and Recovery

A Force for Good

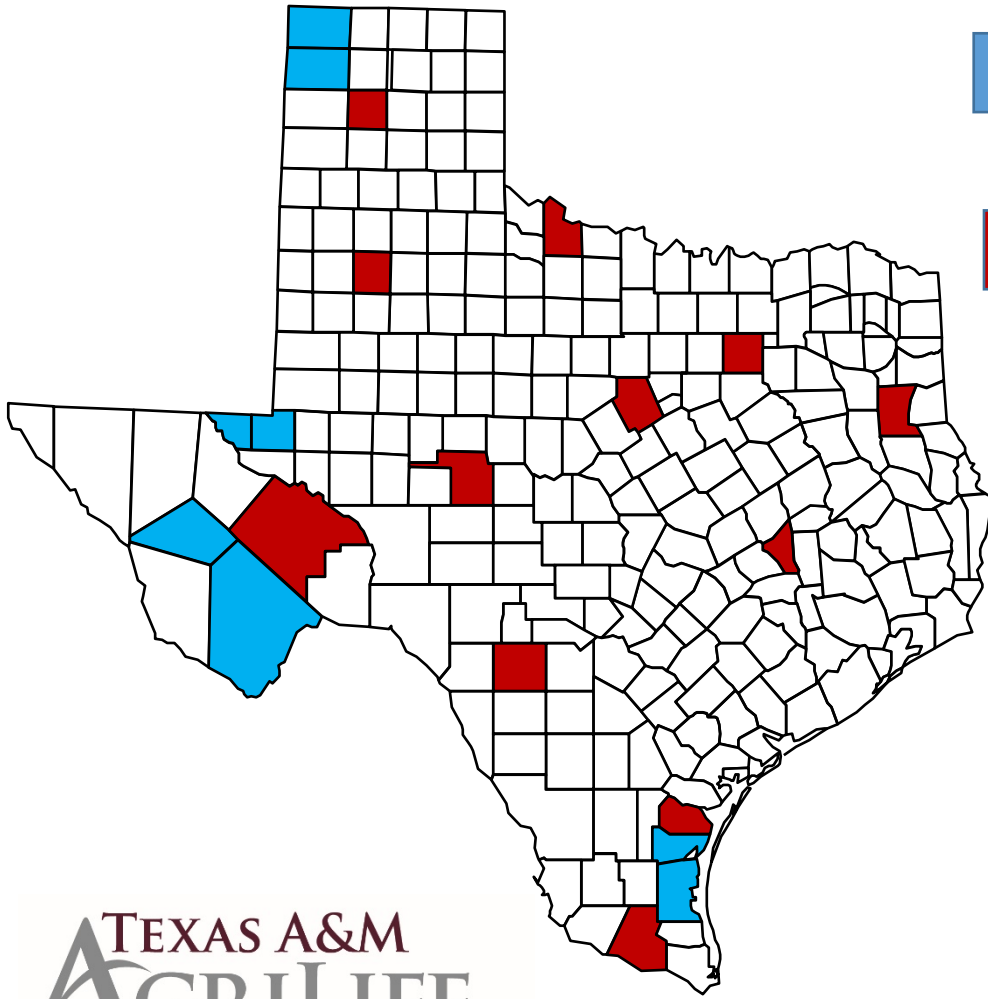


Presentation Overview

- Strengthening the Network
- Disaster Education – Blue Sky Mission
- Our Evolving Dark Sky Mission
- Response Support in Times of Need
 - Animals - TAHC
 - Wildfire - TFS
 - Response and Recovery – TDEM & GLO
 - COVID Response – Partners at Work
 - CARES Act Training
- Closing



TEXAS A&M
AGRI LIFE
EXTENSION SERVICE



- Shared County Extension offices



- District Extension Centers

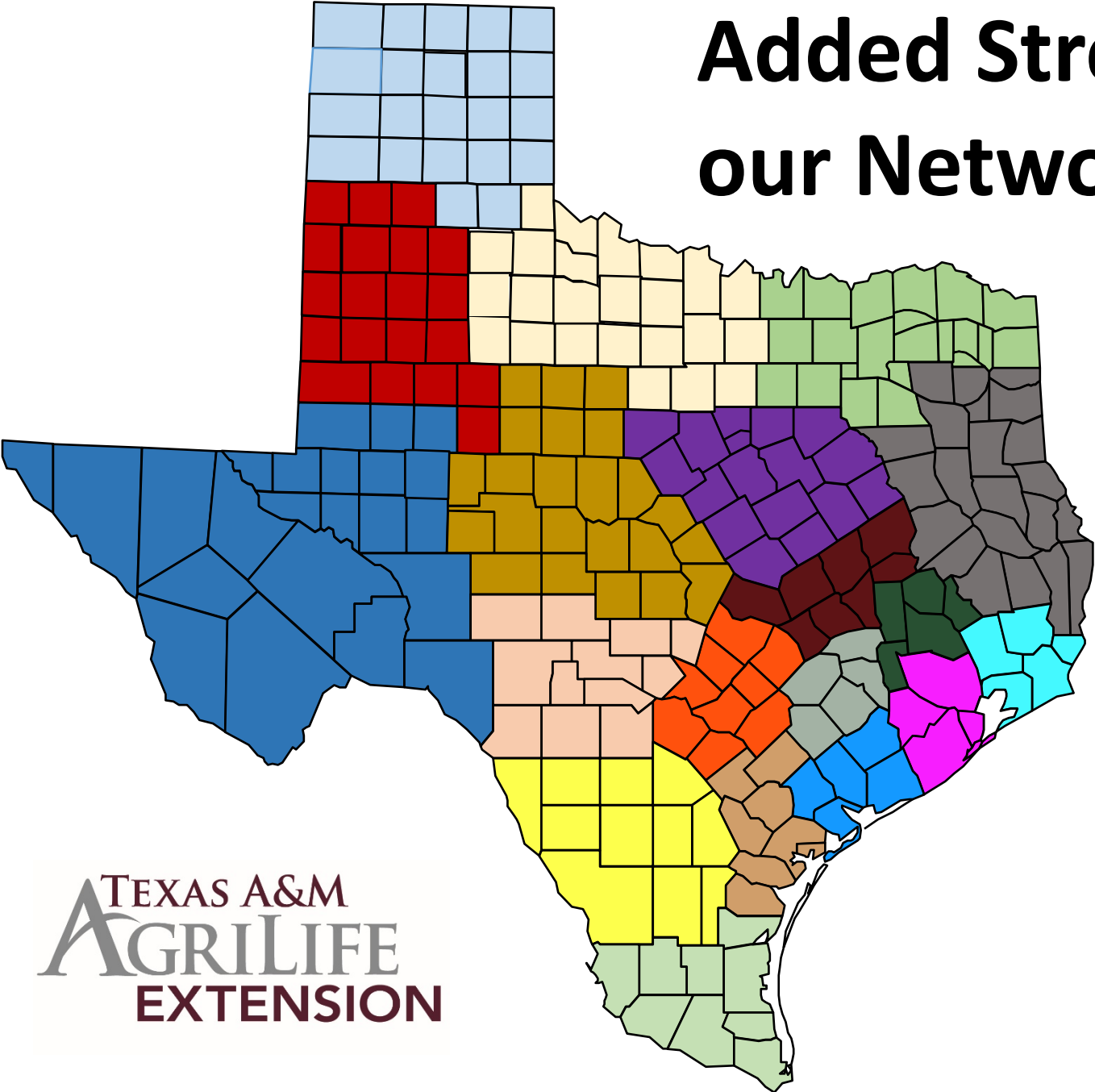
When You Think AgriLife Extension...
Think Network of Educators

And How Can Our Network Help.....

TEXAS A&M
AGRILIFE
EXTENSION

Added Strength to our Network

EA-DAR



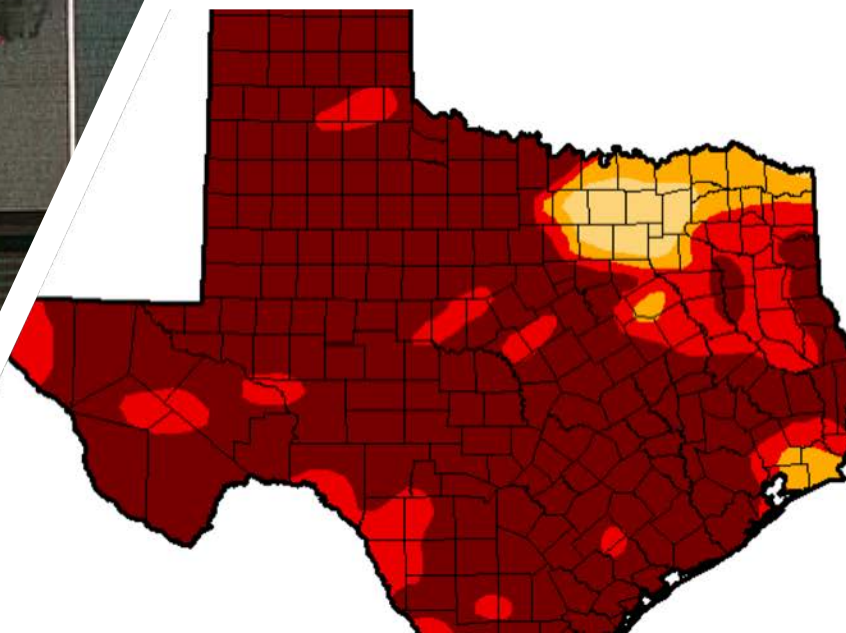
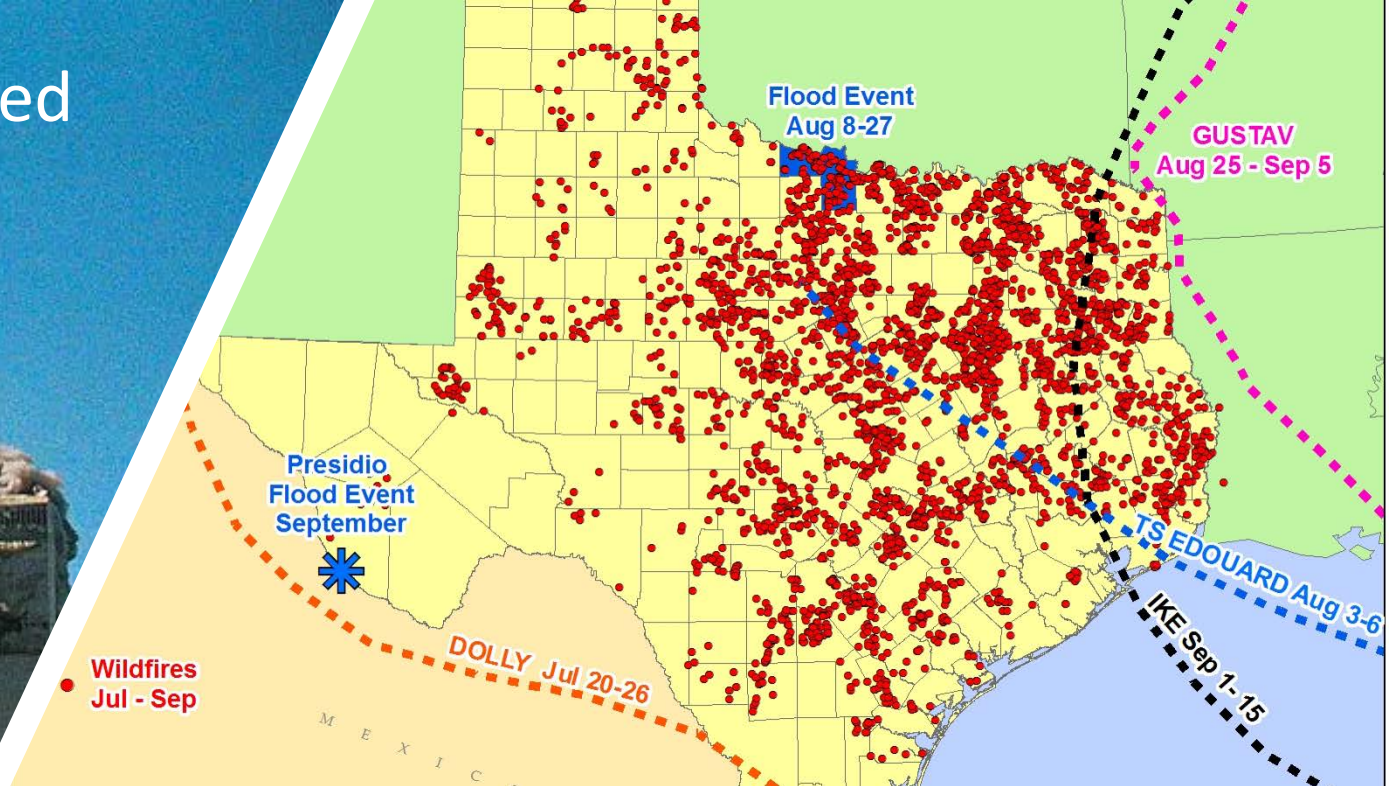
- District 1 Brandon Boughen
- District 2 Curtis Preston
- District 3 Jason Steinbacher
- District 4 Mark LeMense
- District 5 Jennifer Reid
- District 6 Curtis Martin
- District 7 Jeff Fant
- District 8 Raylene Pennington
- District 9 North Asa Jillson
- District 9 Central Matthew Holloway
- District 9 East Will Stevens
- District 9 Metro Merryl Holmes
- District 10 West Troy Luepke
- District 10 East Bryan Davis
- District 11 North Matthew Pfeiffer
- District 11 Central Dustin Adair
- District 11 South Linda Wasserman
- District 12 North Richard Griffin
- District 12 South Matthew Rodriguez

Disaster Educational Mission



- Texas EDEN Website
 - Texashelp.tamu.edu
- Hurricane and Wildland Fire Family & Community Preparedness
- Recovery Outreach Support
- Support for Long Term Recovery Committees, COADS & Philanthropic Organizations
- CHARM Resiliency Workshops
 - Agrilife.org/resilienttexas
- Demonstration of Best Practices & applied Research

Why Our Mission Has Evolved



7/19/2011	0.00	100.00	98.96	95.78	91.19	75.15
3 Months Ago 4/26/2011	0.00	100.00	100.00	94.97	70.42	17.16
Start of Calendar Year 1/4/2011	13.55	86.45	66.68	36.30	13.04	0.00
Start of Water Year 9/28/2010	75.57	24.43	2.43	0.99	0.00	0.00
One Year Ago 7/27/2010	89.01	10.99	2.74	0.44	0.00	0.00

Intensity:



The Drought Monitor focuses on broad-scale conditions. Local conditions may vary. See accompanying text summary for forecast statements.

Author:
Prod. Dinnery

2006 + CEA's - Family Emergency Plan & County Ext Office Disaster Plan



TEXAS ANIMAL HEALTH COMMISSION
Proudly Serving Texas Animal Agriculture
Since 1893





**Spring Green up Assessment
Landowner Liaison to ICP**



**Personnel to EOCs, DDCs, & the SOC
Surge Force**

Assessments of Ag Related Damage & Losses

Preliminary Damage Assessments

Extension Liaisons in Recovery

Request for Public Assistance

Documentation for PA Reimbursements

Completed PA Project Site Inspections

Temporary Housing Mission

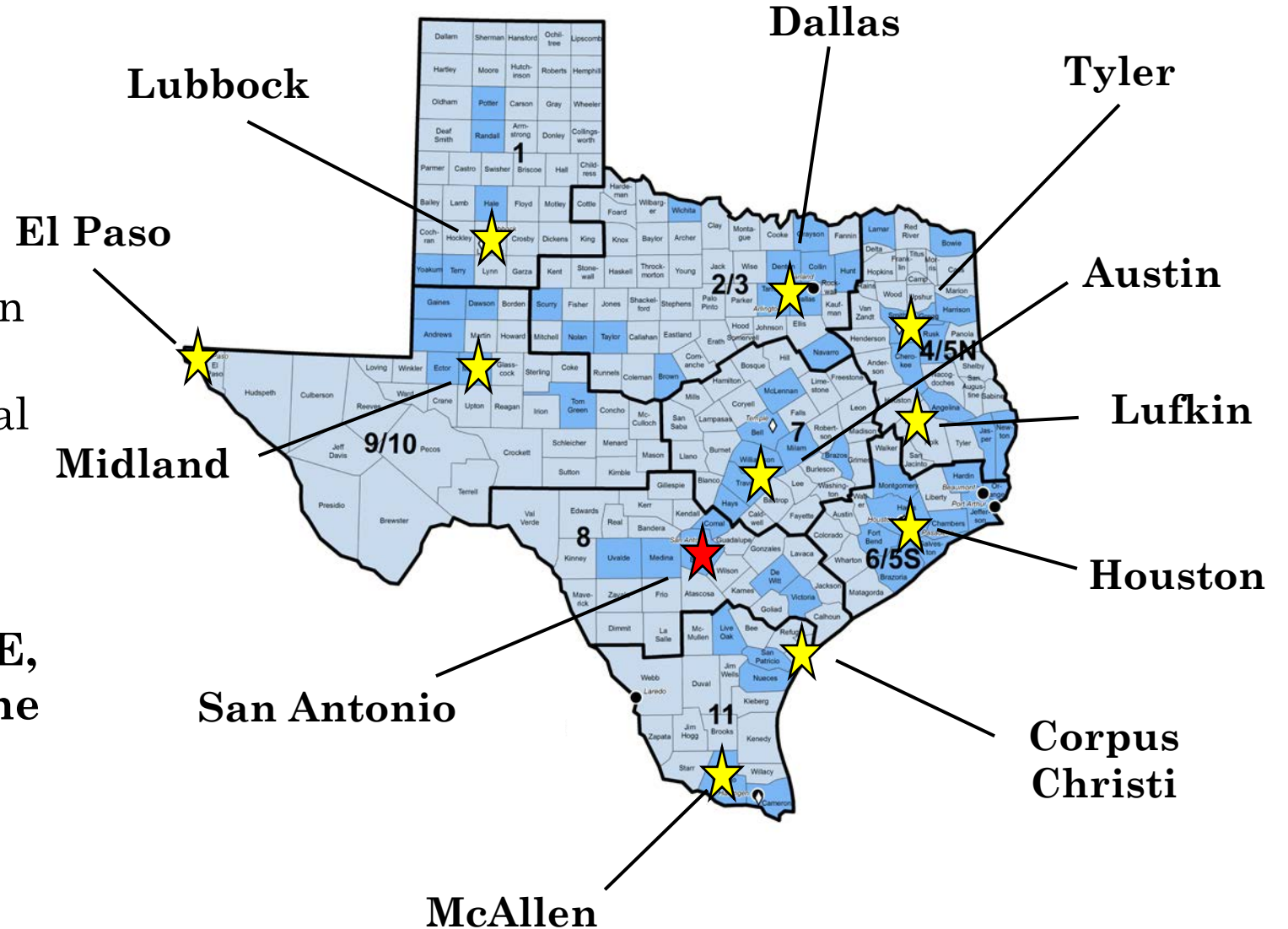


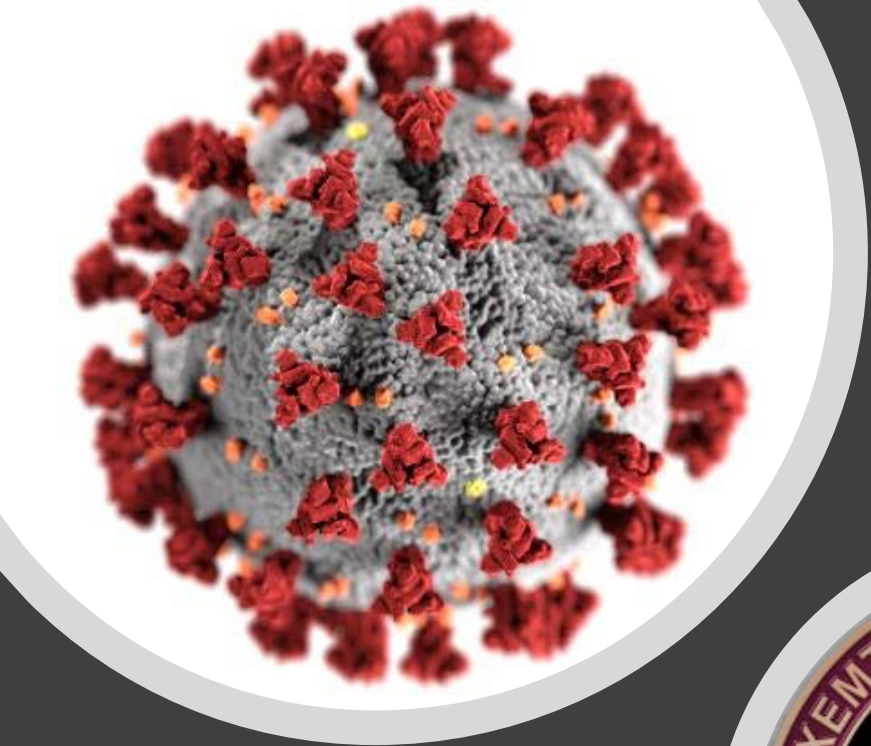
Responding to COVID 19

Expediting Deliveries

Central warehouse supplying eleven locations across the state supplementing the existing Regional Advisory Council capacity as Regional Staging Areas (RSAs)

State's "Amazon" answer to PPE, Testing, Therapeutics, & Vaccine Distribution





Partners at Work

Pony Express PPE Deliveries



- Frontline worker PPE deliveries – 7,062
- Long term care facilities PPE deliveries – 8,574
- 35,057 bundles or pallets of PPE & sanitizing supplies built for pickup
- PPE & thermometers to 7,646 Child Care Providers
- PPE & hand sanitizer to 8,079 polling places across Texas.

151 AgriLife Ext Staff



Pony Express Support of Testing & Medical Supply Deliveries



- Mobile Testing Operations
 - 1.3 mil individuals at 1,194 sites
 - 115,760 high risk persons @ 817 sites
- Binax Tests – 2 mil delivered
 - 772 School Districts
 - 183 Nursing Homes
 - 234 Governmental Entities & Chambers of Commerce
- Remdisivir to 157 hospitals
- 230 ventilators to the 11 RSAs
- 530 therapeutic doses - 10 hospitals
- 876,690 vaccine doses
- 102,745 vaccine records

AgriLife Extension Support of Other CoVID 19 Field Operations



Additional Service to Our Fellow Texans

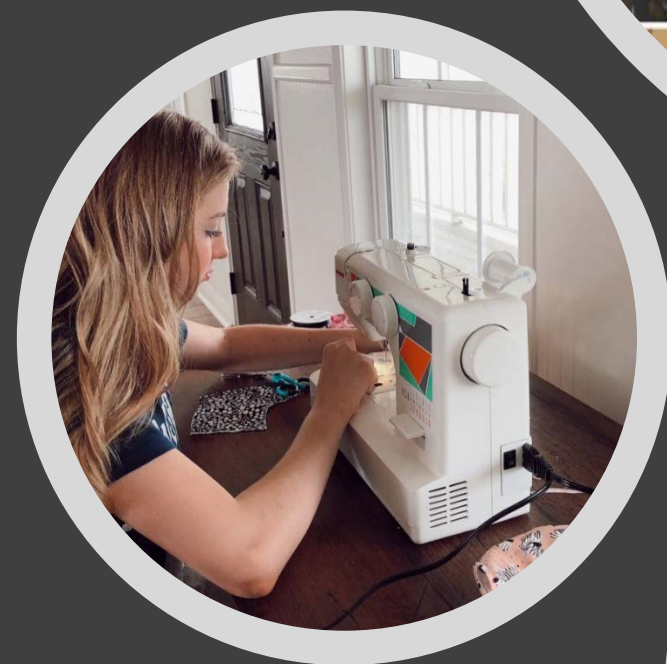
Face Masks – 17,822 made

Food Drives – 16,592 lbs or
13,827 meals

Data Entry at USPHS testing
sites

Contact Tracing Support – 200

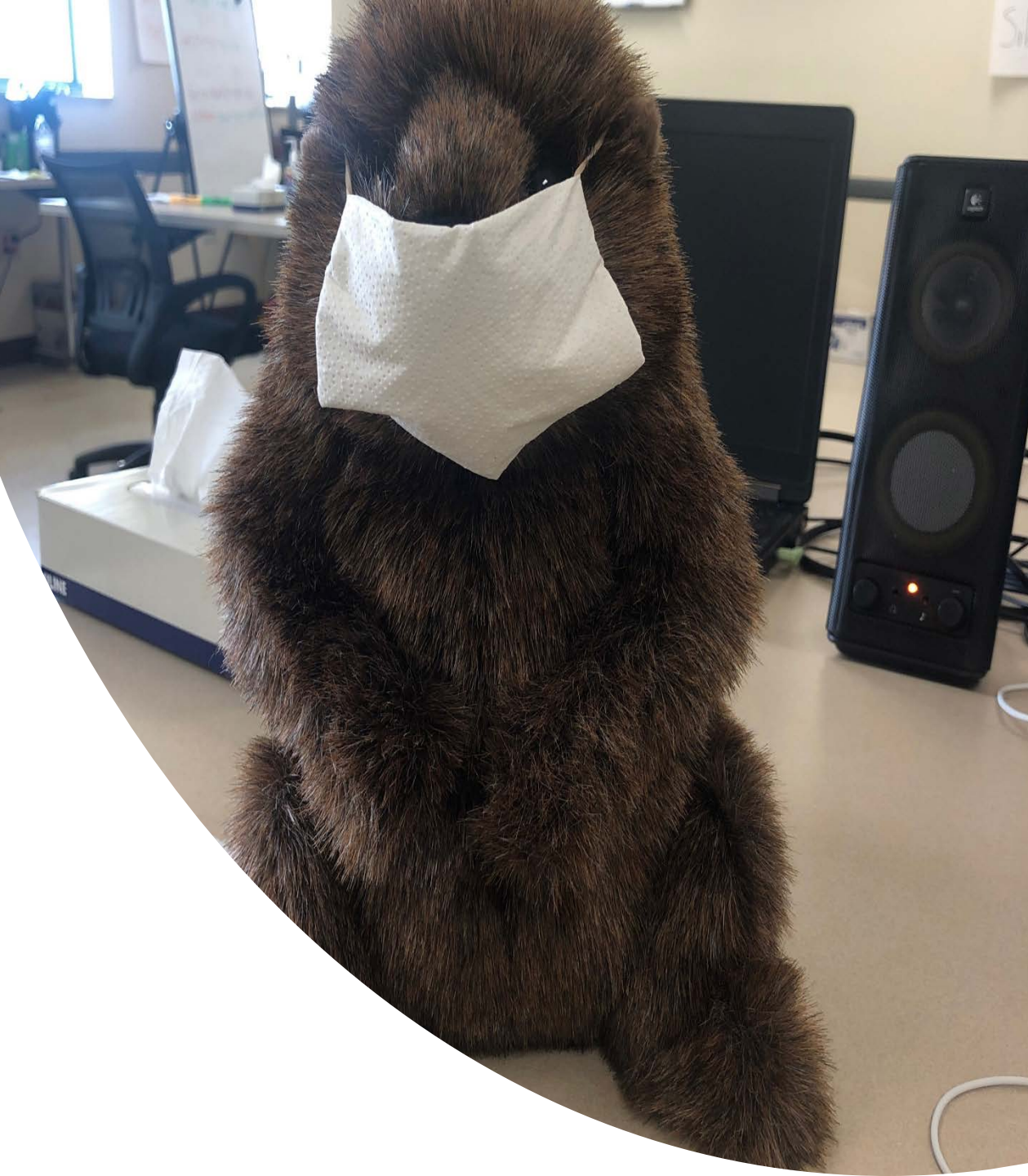
Mental Health First Aid – 1,589



CARES Act Support

- Online Training Modules
 - Federal Relief: An Overview for Local Governments – 4,045 participants
 - Coronavirus Food Assistance Program – 1,317 participants
 - CARES Act for Farmers and Ranchers – 1,073
 - Coronavirus Childcare Provider – 4 modules with 276,229 trained
- Coronavirus Relief Fund
 - 490 CEA Liaisons to local jurisdictions
 - > 600 questions reviewed & responded to
 - Weekly Recovery Updates
 - AgriLife COVID 19 Hub – <https://agrilifeextension.tamu.edu/coronavirus>





COVID 19 Response

**Where every
day is Ground
Hog Day**

**Thank you
Any Questions....**